



## Tetley Scanner

### Multi-band, Multi-format Network Survey System

#### FEATURES

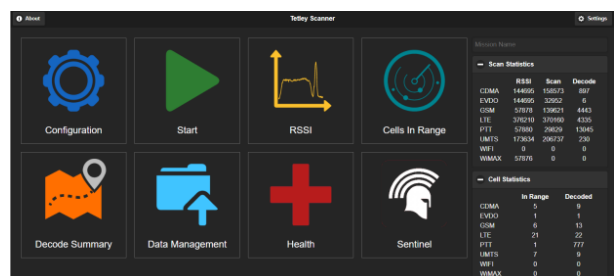
- Simultaneous Multi-band, Multi-format completely passive network survey solution
- Single-button push operation
- Support for GSM, GPRS, EDGE, CDMA2000, 1xRTT, EvDO, WCDMA, HSxPA, WiMAX, LTE, PTT, D-PTT & Wi-Fi
- Now available! Demodulation and decoding of 5G!
- 8 independent 40 MHz RF tuners coupled with powerful signal processing engine for true Software Definable Radio functionality
- Web based GUI, functions as either local or remote sensor
- Real time I&W of Anomalies in the Cellular Environment
- Provides recommended configurations based on current location giving the user a near-instantaneous start time in a new signal environment.
- Passive Tower Location
  - Concurrent collection for GSM, CDMA, UMTS and LTE towers
  - Location estimation based on single or multiple surveys
- Compatibility with common visualization and mapping applications
  - Multiple Geographic Information Systems
  - All data is stored locally or streamed in real time (in-progress) as GPS tagged text based CSV
- Multiple modes of operation
  - Normal mode – User selects protocols and/or bands to be surveyed
  - Expert mode – Flexibility to individually task tuner resources and processing engines

#### KIT CONTENTS

- Receiver Module
- Android Tablet
- Multiple Antennas and Power Cable Assemblies
- Rugged Transportation Case

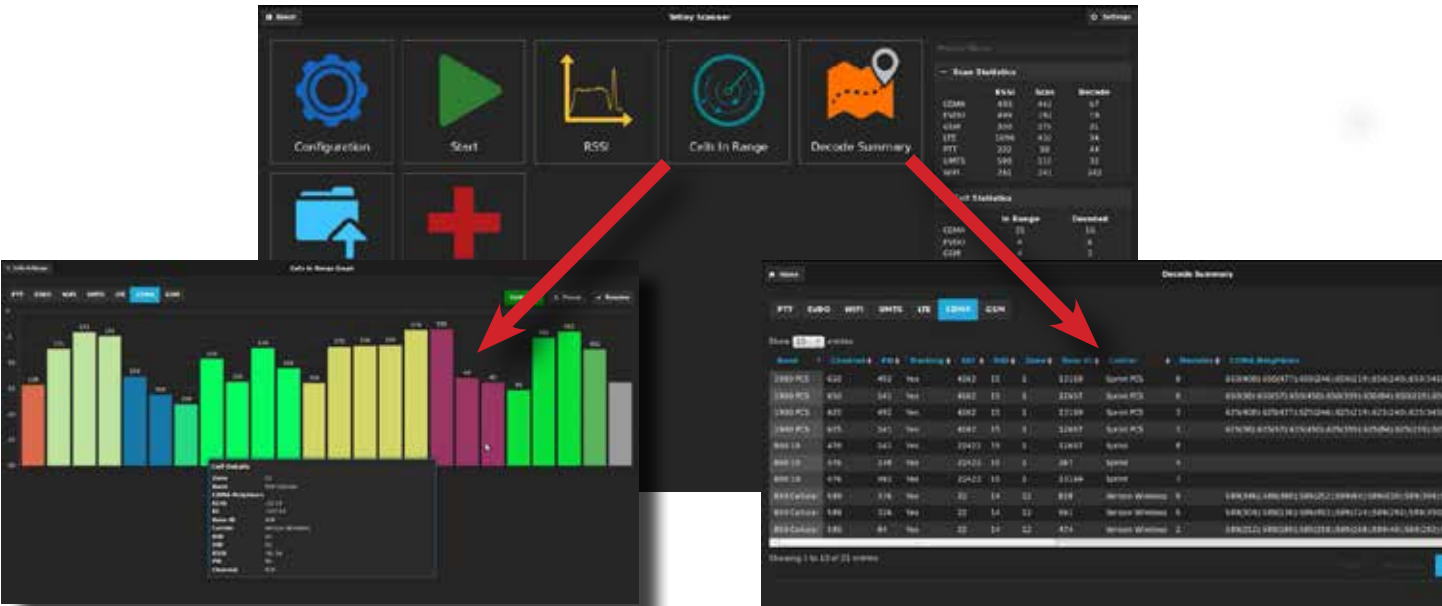
#### APPLICATIONS

- Commercial Wireless Communications Network Survey
- Drive Testing
- Spectrum Interference Monitoring
- Competitive Market Analysis
- Public Safety Interoperability Assessment/Validation



**DESCRIPTION**

The Tetley Scanner is the most powerful and flexible portable survey system available. Tetley Scanner combines 8 independent 40 MHz RF tuners with a highspeed, FPGA-based signal processing engine to provide true software defined radio functionality. Tetley Scanner provides the power and flexibility of a truly simultaneous multi-band, multi-radio technology scanning solution. Tetley Scanner is powerful and flexible but also easy to operate. Once power is applied, the unit automatically manages the system resources for optimized scanning and it can also be configured manually to allow operations for specific RF environments. Tetley Scanner identifies new cells quickly with no lengthy synchronization period, decoding overhead parameters while constantly logging signal strength, signal quality parameters and other cell signaling information. Tetley Scanner’s tower location capability passively measures signal strength and doppler shift of the cellular signals present during a drive survey to determine the location of commercial towers. Tetley Scanner supports local control via any device using a web-based interface.



**SPECIFICATIONS**

	Size	Weight	Power
SWAP Details	16" x 12.5" x 5"	21.6 lbs.	Low Power Mode: 120 W, High Power Mode: 180 W Input: 10 - 32 vDC
Frequency Range			20-6000 MHz
Wireless Technologies			GSM, GPRS, EDGE, CDMA2000, 1xRTT, EvDO, WCDMA, HSxPA, WiMAX, LTE, 5G, PTT, D-PTT & Wi-Fi

System specifications subject to change without notice, contact factory for current specifications.



For more details or questions contact: [sales@g3ti.net](mailto:sales@g3ti.net) | +1.410.290.8110

G3 Technologies, Inc. | 10280 Old Columbia Road | Suite 260 | Columbia, MD 21046 | [www.g3ti.net](http://www.g3ti.net)