

## Tetley Handy Kit

### Low profile 2G/3G/4G/5G/Wi-Fi Environmental Survey Kit

#### FEATURES

- Walkabout – Premier drive test capability and network characterization; call/ SMS/data generation; Advanced Network Characterization (ANCA) functionality.
- Lookout – State-of-the-art Non-Alerting Technique (NAT) stimulator for GSM, CDMA, WCDMA, LTE, and 5G NR.
- Safe Phone – Collects and analyzes network characteristics in real-time; detects malicious activity including silent SMS events (NAT), jamming, and anomalous registration events.
- Signaling – Display of all overhead messages in real-time. All overhead messages are also logged for post-operation forensic analysis. Decodes all Layer 2 and Layer 3 messages as well as all SIB's and MIB's in accordance with the 3GPP Release 16 specification.

#### KIT CONTENTS

- Android-based Smart Phone
- AC to DC Charger
- Car Charger
- Tetley Handy Kit Software
- Carry Bag
- SIM Slot Pin \*nano SIM
- Earbuds

#### APPLICATIONS

- Drive Testing
- Situational Awareness
- Device ID Correlation
- Pattern of Life
- Surveillance Detection Notification
- Analysis in Rover and RaptorX
- Detection of 5G Serving Cells



## DESCRIPTION

The Tetley Handy Kit is the most advanced and most capable low profile multi-protocol cellular network characterization and survey tool available today. The Tetley Handy Kit utilizes G3T's powerful application suite of optimized and efficient methods for collecting and characterizing GSM, CDMA, UMTS, LTE, 5G NR and Wi-Fi networks all running on the Android OS the most ubiquitous mobile device platform in the world today. The Tetley Handy Kit includes all of the functionality to support traditional network characterization, with many non-traditional functions that allow Tetley Handy Kit end users to maximize their on-location effectiveness and safety. The Tetley Handy Kit is truly a cut above all other kits!

## APPLICATIONS

### Advanced Network Characterization

Provides all the necessary details to fully comprehend critical parameters of individual wireless communication networks. Allows the user to interact with networks in a controlled manner to identify useful non-broadcast network features including identity changing and authentication frequency, other security details, typical call setup, data setup and SMS sequence and timing.

### Planning

Allows the user to efficiently find commercial cellular channels and neighbors cells within range, gather critical parameters, identify dependencies and map entire networks with easily visualized geo-tagged data.

### NAT Stimulation

Highly portable, easy to operate NAT stimulator functionality.

## SUPPORTED BANDS & FREQUENCY RANGES

SUPPORTED BANDS & FREQUENCY RANGES

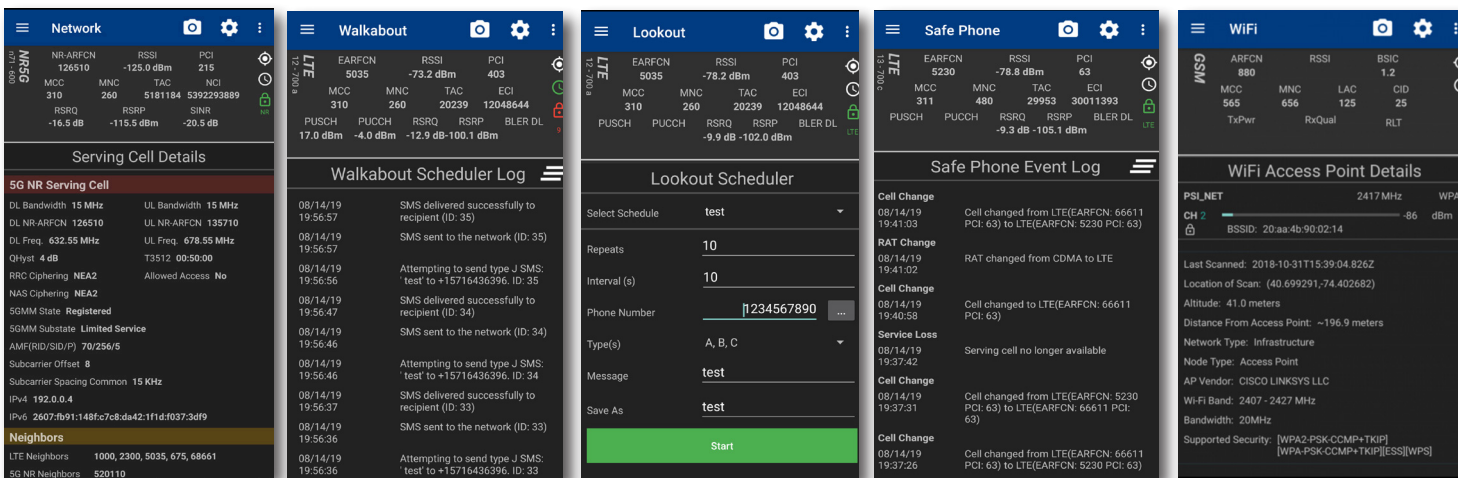
GSM/GPRS/EDGE: 850/900/1800/1900 MHz

CDMA 1xRTT/EVDO: 800/1900 MHz

UMTS/HSxPA/WCDMA: 850/900/1700(AWS)/1900/2100 MHz

LTE (FDD/TDD): 700/800/850/900/1500/1700/1800/1900/2100/2300/2500/2600 MHz

5G NR: FR1



System specifications subject to change without notice, contact factory for current specifications.



Scan Me!



PROVIDING NEXT GENERATION WIRELESS SOLUTIONS

For more details or questions contact: [sales@g3ti.net](mailto:sales@g3ti.net) | +1.410.290.8110

G3 Technologies, Inc. | 10280 Old Columbia Road | Suite 260 | Columbia, MD 21046 | [www.g3ti.net](http://www.g3ti.net)