

Tetley Handy Kit

Low profile 2G/3G/4G/5G/Wi-Fi Environmental Survey Kit

FEATURES

- **Cellular Survey** - Identifies local GSM, UMTS, LTE, and NR5G cellular networks by rapidly cycling through the configured technologies and analyzing broadcasted network messages to display cell parameters, providing valuable information for network analysis and troubleshooting.
- **Walkabout** – Premier drive test capability and network characterization; call/ SMS/data generation; Advanced Network Characterization (ANCA) functionality
- **Lookout** – State-of -the-art Non-Alerting Technique (NAT) stimulator for GSM, CDMA, WCDMA, LTE, and 5G NR
- **Safe Phone** – Collects and analyzes network characteristics in real-time; detects malicious activity including silent SMS events (NAT), jamming, and anomalous registration events
- **Signaling** – Display of all overhead messages in real-time. All overhead messages are also logged for post-operation forensic analysis. Decodes all Layer 2 and Layer 3 messages as well as all SIB's and MIB's in accordance with the 3GPP Release 16 specification
- **Mapping** – Tetley Handy now includes streaming functionality which allows the user to follow their location in real time on a map readily available while maintaining awareness of the cellular environment
- **Scheduling and Geofencing** – New improved functionality with geofencing and scheduling, which allows for more streamlined and automated control of operation of the Tetley Handy

KIT CONTENTS

- Android-based Smart Phone
- AC to DC Charger
- Car Charger
- Tetley Handy Kit Software
- Carry Bag
- SIM Slot Pin *nano SIM
- Earbuds

APPLICATIONS

- Network RAT Survey
- Carrier-specific Survey
- NATs Stimulation
- Drive Testing
- Situational Awareness
- Device ID Correlation
- Pattern of Life
- Surveillance Detection Notification
- Analysis in Rover and RaptorX

DESCRIPTION

The Tetley Handy Kit is the most advanced and most capable low profile multi-protocol cellular network characterization and survey tool available today. The Tetley Handy Kit utilizes G3T's powerful application suite of optimized and efficient methods for collecting and characterizing GSM, CDMA, UMTS, LTE, 5G NR and Wi-Fi networks all running on the Android OS the most ubiquitous mobile device platform in the world today. The Tetley Handy Kit includes all of the functionality to support traditional network characterization, with many non-traditional functions that allow Tetley Handy Kit end users to maximize their on-location effectiveness and safety.

There are two types of survey available: network survey and cellular survey. Network Survey is an RF network analysis tool designed for cellular network characterization and diagnostics. This feature logs all pertinent serving cell and neighbor cell parameters as the registered handset interacts with and moves through a cellular network. Network Survey supports GSM, CDMA, UMTS, LTE, and 5G NR and is ideal for characterizing individual carrier networks.

Cellular Survey is an RF signal analysis tool designed for more advanced cellular network diagnostics. It supports identification of nearby GSM, UMTS, LTE, and NR5G cells by sequentially scanning configured radio access technologies through the limited decoding of broadcast system information messages. For each detected cell, detailed parameters and associated network messages are displayed, enabling in-depth visibility into the local cellular environment. This feature is ideal for engineering and field-oriented applications. The Tetley Handy Kit is truly a cut above all other kits!

SUPPORTED BANDS & FREQUENCY RANGES

GSM/GPRS/EDGE: 850/900/1800/1900 MHz

CDMA1xRTT/EVDO: 800/1900 MHz

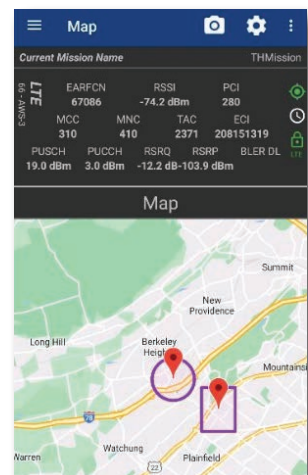
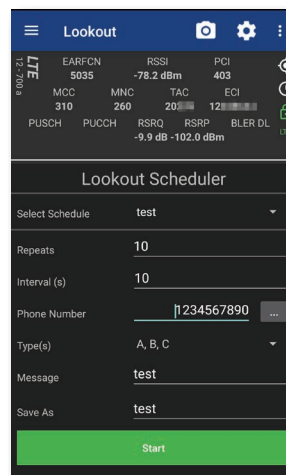
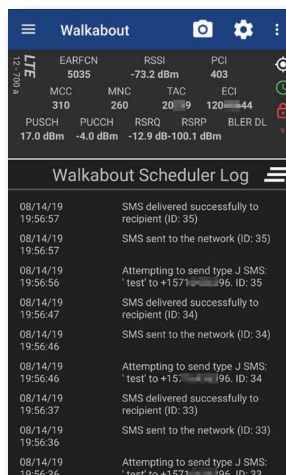
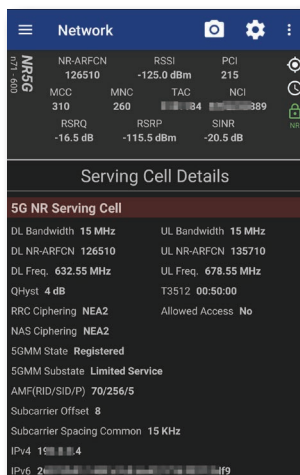
UMTS/HSPA/WCDMA: 850/900/1700(AWS)/1900/2100 MHz

LTE (FDD/TDD): 700/800/850/900/1500/1700/1800/1900/2100/2300/2500/2600 MHz

5G NR: FR1

Wi-Fi: 2.4/5 GHz

** Bands and frequency Ranges depends on the support from the carrier and the THA phone model.*



Scan Me!



PROVIDING NEXT GENERATION WIRELESS SOLUTIONS

For more details or questions contact: sales@g3ti.net | +1.410.290.8110

G3 Technologies, Inc. | 10280 Old Columbia Road | Suite 260 | Columbia, MD 21046 | www.g3ti.net