



Tetley PileDriver **IMSI, Wi-Fi, Bluetooth® MAC Collection & Correlation**

FEATURES

- Dual band Wi-Fi a/b/g/n/ac, Bluetooth Classic and Bluetooth Low Energy collection
- Real-time collection and correlation of Hotspot 2.0 IMSI, WIFI MAC, and Bluetooth (Classic & Low Energy) MAC addresses to a single device
- Generate and export correlation reports
- Packet Capture (PCAP) for post-mission analysis
- Configurable VPN and Remote Access for Forward Operations
- Geofencing, Scheduling, and Auto-start configurations capable.
- Surveillance Detection monitoring & notification
- Bluetooth® Low-Energy device correlation*
- Multi-protocol correlation interoperable with industry mapping tools
- Capable of Streaming Data Directly into Rover in Real-Time
- Autonomous mode to allow for data collection upon power-up
- Hardware Features**
- Low SWaP for easy concealment
- Range extension kit with directional antennas and LNA's
- User specific Hide-in-plain-sight form factors available upon

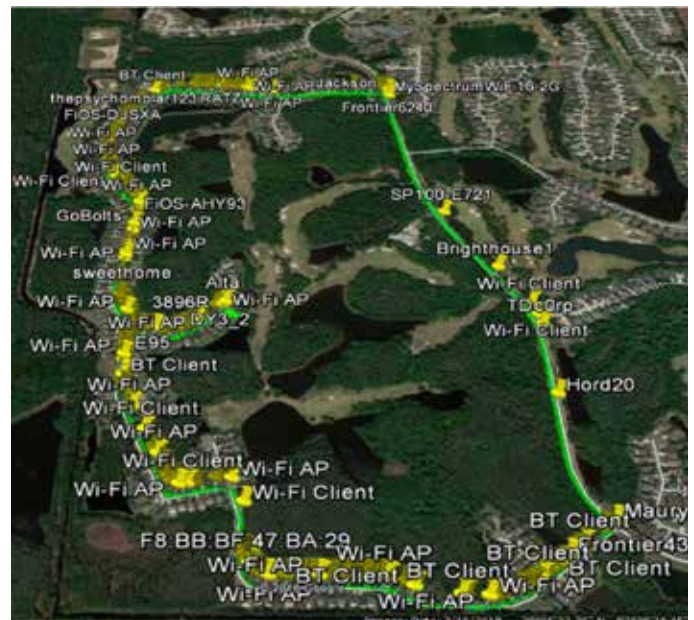
KIT CONTENTS

- Tetley PileDriver Module
- Collection Antennas
- External Battery
- AC Power Supply

APPLICATIONS

- Situational Awareness
- Device ID Collection & Correlation
- Pattern of Life
- Surveillance Detection
- Blue Force / White List tracking
- Real-time and Post-processed content analysis
- Signature Management
- Identity Management

Tetley PileDriver can deliver correlated device ID's to a single device by looking at Bluetooth® and Wi-Fi MAC addresses and matching them to one device make, model, UUID, and OUI (vendor ID). If the device ID is unknown but there is a known pattern of life for at least 2 locations, Tetley PileDriver can determine the device identity and provide notifications to the user when that ID is detected in subsequent collections. Tetley PileDriver can be configured to run at pre-configured time intervals and provide the user with notifications in the event a unique device ID appears at each location with the user while filtering out known white-listed devices. Tetley PileDriver supports remote connectivity for leave behind capability.



SPECIFICATIONS

7-20 VDC
10W (Max), 8W (Nominal)



PROVIDING NEXT GENERATION WIRELESS SOLUTIONS

For more details or questions contact: sales@g3ti.net | +1.410.290.8110

G3 Technologies, Inc. | 10280 Old Columbia Road | Suite 260 | Columbia, MD 21046 | www.g3ti.net